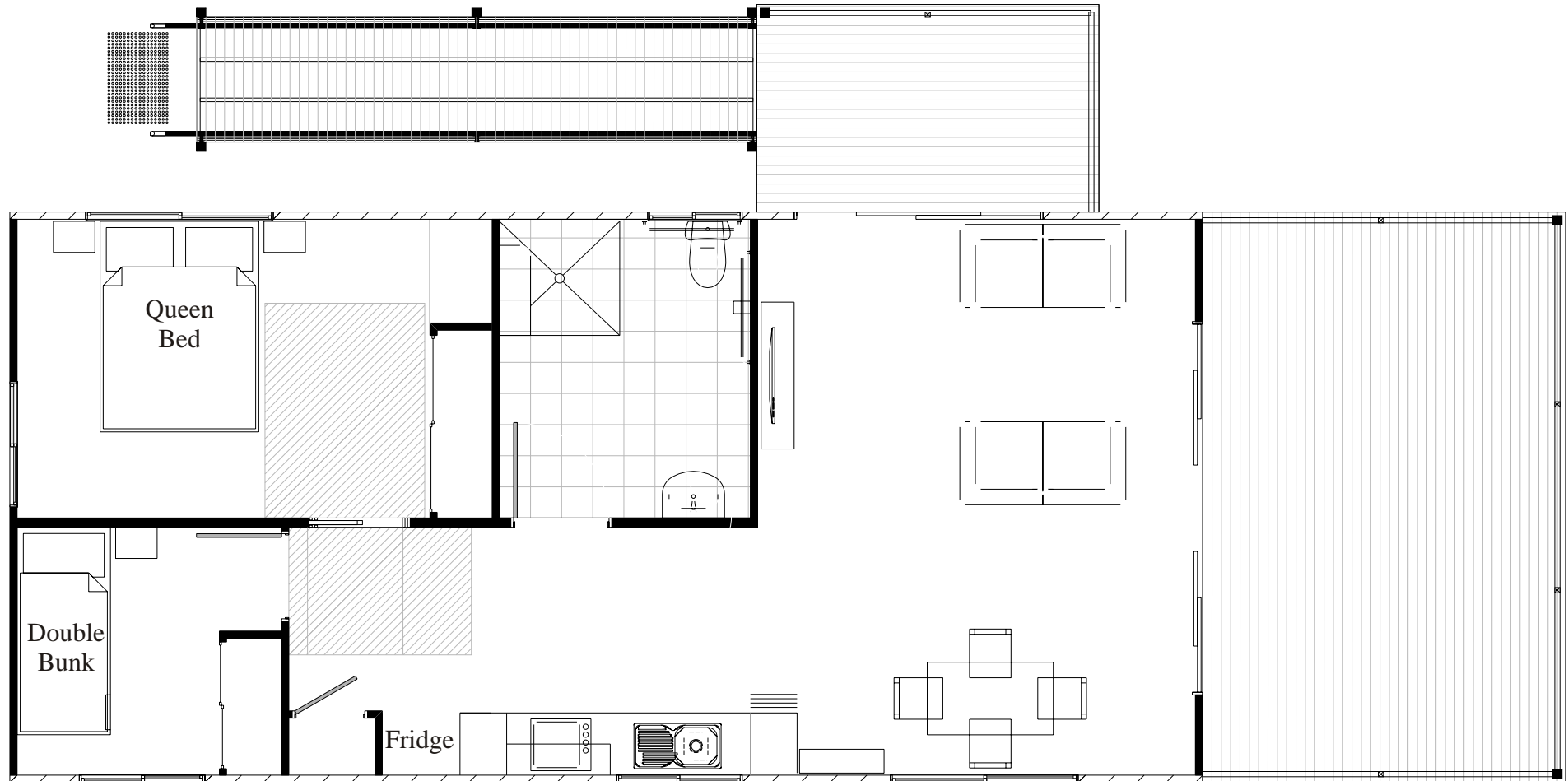




KINGSCLIFF BEACH HOLIDAY PARK

Ocean Cabin 2 Brm with Facilities Floor Plan

Queen Bed & Double Bunk



CABIN FEATURES:

- * CAN ACCOMMODATE UP TO 4 ADULTS
- * BEDROOM 1 - QUEEN BED
- * BEDROOM 2 - DOUBLE BUNK
- * LOUNGE -WITH A FLAT SCREEN LCD TV
- * AIR CONDITIONING
- * BATHROOM DISABLE FACILITIES - SHOWER AND TOILET
- * KITCHEN - FULLY-EQUIPPED WITH
- * FULL-SIZED FRIDGE
- * TEA AND COFFEE MAKING FACILITIES
- * LINEN INCLUDED